

## ELP/Si

Parallel-resistive 2-conductor with screen

### Usage

Frost protection and heating products

Power range 10-40 W/m

Constant effect, halogen-free

 130 °C  180 °C

✓ Can be cut during installation for good fit

✓ Soft and pliable

The installation of this heating cable is very cost effective because it is only connected at one end. The heating cable consists of a series of heating zones (length = contact distance) and the cable can be cut to the desired length in sections of the contact distance. During cutting, the heating circuit is broken up to the next contact point and this inactive part can be used as a cold conductor. During the design, a contact distance per planned heating circuit must be added.

## Specifications

Connection voltage	230 V
Number of conductors	2 pcs
Bending radius, min.	30 mm
Exposure temperature (power off), max.	180 °C
-BO	Protective conductor: Braided, Outer casing: TPE
Contains SVHC substances according to REACH	No
Installation temperature, min.	-60 °C
Insulation material intermediate	Silicone
Insulation material inner	Silicone
Insulation material outer	Silicone
Cable type	Parallel-resistive 2-conductor with screen
Contact distance	1.0
Conductor area	1,50 mm <sup>2</sup>
Exposure temperature (power on), max.	Up to 130 °C

## Documents



CE document



Manual

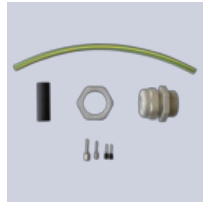
## Warranty

The general terms of delivery are listed below.  
Our warranty terms

## Article list

Article number	Description	Dimensions W x H (mm)	Exposure temperature (power on), max. (°C)	Output (W/m)
8935250	ELP/Si 10 BO	9.8 x 5.3	130	10
8935386	ELP/Si 20 BO	9.8 x 5.3	130	20
8935387	ELP/Si 30 BO	9.8 x 5.3	130	30
8935388	ELP/Si 40 BO	9.8 x 5.3	130	40

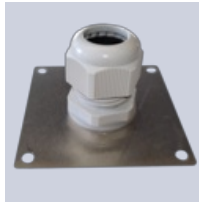
## Supplementary products



Connection kit  
ELVB-ELPA2-25



Termination kit  
EL-ECP2



Insulation plate  
ELISD-P2



ELTC-21

Learn more about this product: <https://www.ebeco.com/products/industry/elpsi>