

ELP/Si

Parallel-resistive 2-conductor with screen

Användning

Frost protection and heating products
Power range 10-40 W/m
Constant effect, halogen-free

 130 °C  180 °C

- ✔ Can be cut during installation for good fit
- ✔ Soft and pliable

The installation of this heating cable is very cost effective because it is only connected at one end. The heating cable consists of a series of heating zones (length = contact distance) and the cable can be cut to the desired length in sections of the contact distance. During cutting, the heating circuit is broken up to the next contact point and this inactive part can be used as a cold conductor. During the design, a contact distance per planned heating circuit must be added.

Specifications

Anslutningsspänning	230 V
Antal ledare	2 st
Böjningsradie, min.	30 mm
Exponeringstemperatur (power off), max.	180 °C
-BO	Protective conductor: Braided, Outer casing: TPE
Innehåller SVHC ämnen enligt REACH	No
Installationstemperatur, min.	-60 °C
Isoleringsmaterial mellan	Silicone
Isoleringsmaterial inre	Silicone
Isoleringsmaterial yttre	Silicone
Kabeltyp	Parallel-resistive 2-conductor with screen
Kontaktavstånd	1.0
Ledararea	1,50 mm ²
Exponeringstemperatur (power on), max.	Upp till 130 °C

Documents

 CE document

 Manual

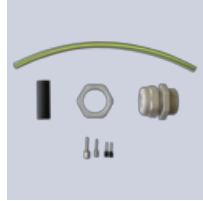
Warranty

The general terms of delivery are listed below.
Our warranty terms

Article list

Article number	Description	Dimensions W x H (mm)	Exposure temperature (power on), max. (°C)	Output (W/m)
8935250	ELP/Si 10 BO	9.8 x 5.3	130	10
8935386	ELP/Si 20 BO	9.8 x 5.3	130	20
8935387	ELP/Si 30 BO	9.8 x 5.3	130	30
8935388	ELP/Si 40 BO	9.8 x 5.3	130	40

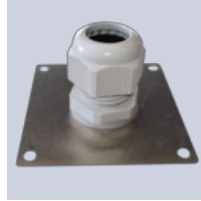
Supplementary products



Connection kit
ELVB-ELPA2-25



Termination kit
EL-ECP2



Insulation plate
ELISD-P2



ELTC-21

Learn more about this product: <https://www.ebeco.com/en/products/industry/elpsi>