





Electrical enclosure

Combined temperature and humidity control

Användning

Snow melting installations
Frost protection
Underfloor heating

 Energy program  Display

- ✔ Large selection of sizes
- ✔ Energy-efficient installation
- ✔ Cost-effective and flexible

Control cabinet with thermostat EB-Therm 800. Also includes main switch, residual current device with alarm contact, circuit breakers, contactors, selector switch, transformer, 3 m sensor cable (temperature), terminal blocks, and manual for EB-Therm 800 along with a standard drawing. The cabinet is prepared for ground/ceiling/temperature sensors. The thermostat features a built-in operating time counter.

Specifications

Anslutningsspänning	400/230 V
Innehåller SVHC ämnen enligt REACH	No
Kapslingsklass	IP55, IP65
Omgivningstemperatur	-20 - 45 °C
Sensor	Prepared for humidity & temperature sensor

Documents

 CE document

Warranty



Ebeco AB provides a 5-year product guarantee in the event of material defects.
Our warranty terms

Article list

Article number	Fuse	Dimensions W x H x D (mm)
8935078	1x13	340 x 460 x 160
8935079	1x16	340 x 460 x 160
8935081	3x13	340 x 460 x 160
8935082	3x16	340 x 460 x 160
8935083	6x13	448 x 610 x 160
8935084	6x16	448 x 610 x 160
8935085	9x13	448 x 842 x 160
8935086	9x16	448 x 842 x 160
8935110	1x20	340 x 460 x 160
8935111	3x20	340 x 460 x 160
8935113	6x20	448 x 610 x 160
8935115	9x20	448 x 842 x 160
8935117	12x13	448 x 1122 x 160
8935118	12x16	448 x 1122 x 160
8935119	12x20	448 x 1122 x 160
8935121	15x13	575 x 735 x 180
8935122	15x16	575 x 735 x 180
8935123	15x20	575 x 735 x 180
8935125	18x13	575 x 860 x 180
8935126	18x16	575 x 860 x 180
8935127	18x20	575 x 860 x 180

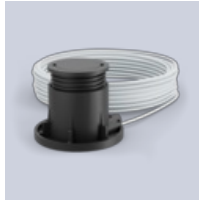
Supplementary products



Roof sensor



Enclosed sensor



Ground sensor

Learn more about this product: <https://www.ebeco.com/en/products/control/electrical-enclosure>